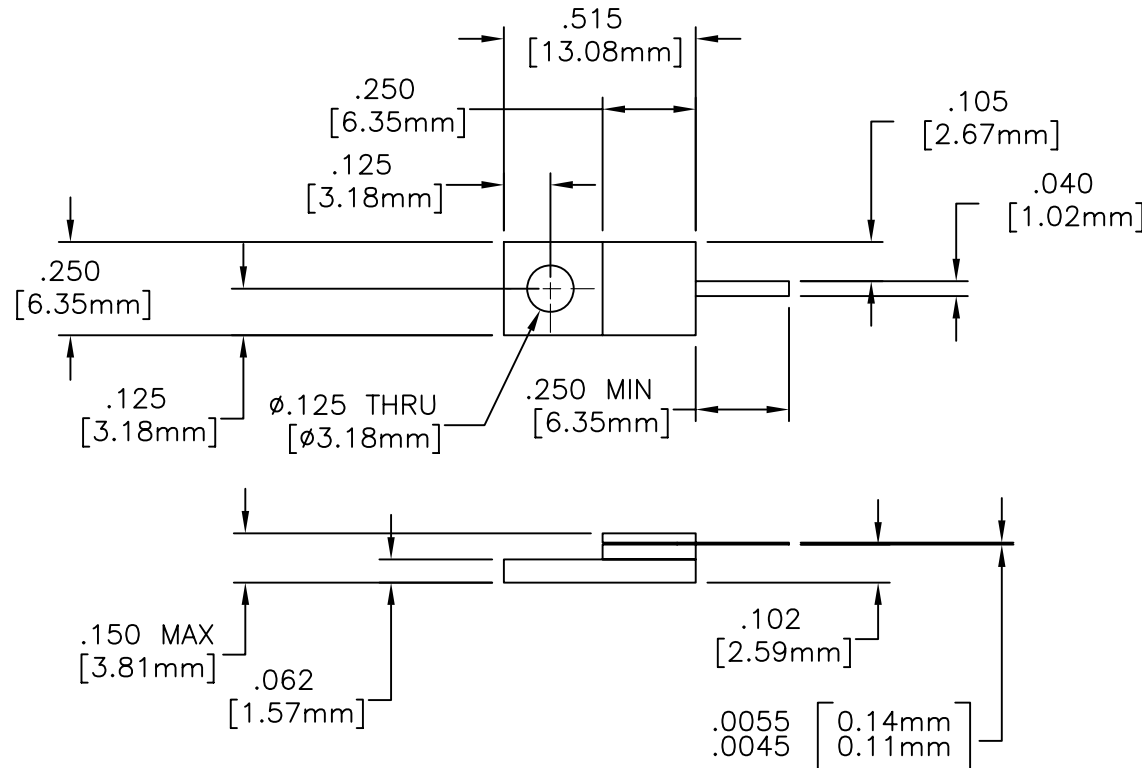
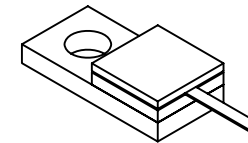


EDD

NOTES:
UNLESS OTHERWISE SPECIFIED, TOLERANCES ARE $\pm .010$ " [.254mm].

DRAWING NO.:
32A1122F

REV.:
-



MATERIALS:


FLANGE: COPPER 1/4 HD
 SUBSTRATE: BERYLLIUM OXIDE
 COVER: ALUMINA
 TAB: BERYLLIUM COPPER PER ASTM B194
 RESISTIVE FILM: THIN FILM

FINISH:

RoHS COMPLIANT
 FLANGE: NICKEL OVER COPPER
 TAB: SILVER PLATED

ELECTRICAL:

NOMINAL IMPEDANCE: 50 OHMS
 FREQUENCY RANGE: DC-6.0 GHz
 VSWR (MAX): 1.20:1
 AVERAGE POWER: 60 WATTS
 DC RESISTANCE: $50 \pm 5\%$ OHMS
 TEMPERATURE COEFFICIENT: LESS THAN 200 PPM
 OPERATING TEMPERATURE: -55°C TO $+150^{\circ}\text{C}$

				EN# 06-F0824	APVD	DATE	REFERENCE	 8851 OLD KANSAS AVE. STUART, FL. 34997 772-286-9300			
				UNLESS OTHERWISE SPECIFIED			MATERIAL	TITLE TERMINATION, FLANGE MOUNT, 60 WATT			
				1. DO NOT SCALE DRAWING 2. DIMENSIONS ARE IN INCHES 3. DIMENSIONS ARE AFTER PLATING 4. CORNERS, EDGES AND FILLETS: R MAX 5. SURFACE ROUGHNESS: 6. REMOVE ALL BURRS			MATERIAL			-	
				TOLERANCES			FINISH				
				.X \pm .XX \pm .XXX \pm ANGLES X° \pm			SCALE	CAGE CODE ID NO.	SIZE	DRAWING NO.:	REV.
				THE INFORMATION CONTAINED HEREIN IS: (A) CONSIDERED PROPRIETARY TO FLORIDA RF LABS INC.; (B) PROTECTED BY COPYRIGHT OWNED BY FLORIDA RF LABS INC.; (C) CONSIDERED A "WORK FOR HIRE" UNDER COPYRIGHT LAW; (D) PROTECTED BY TRADE SECRET LAWS WHICH MAKE ILLEGAL THE MISAPPROPRIATION OF THIS INFORMATION; AND (E) IS TO BE USED SOLELY FOR THE PURPOSE WHICH IT IS SUPPLIED. THIS INFORMATION SHALL NOT BE DISCLOSED IN WHOLE OR IN PART, TO ANY PARTY, FOR ANY REASON WITHOUT THE EXPRESS WRITTEN CONSENT OF A QUALIFIED EXECUTIVE OF FLORIDA RF LABS INC.			2/1	2Y194	A	32A1122F	-
REV.	DESCRIPTION	DRAWN	APVD.				MFG:	CHKD.:	DRAWN: AM 9/22/06	SHEET OF	