

# EDD

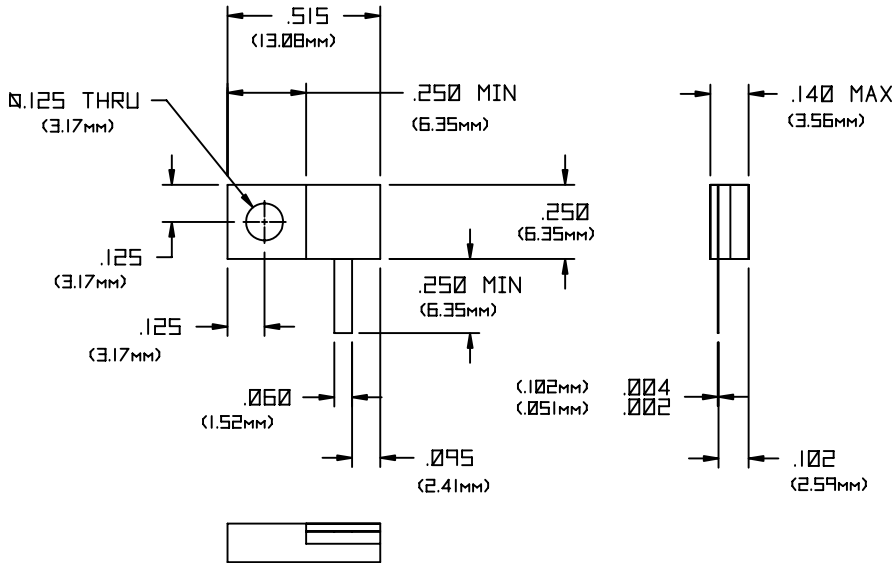
1. UNLESS OTHERWISE SPECIFIED TOLERANCES ARE  $\pm 0.10$  (.254MM)

DRAWING NO.:

**32A1156F**

REV.

-



**MATERIALS:**

FLANGE: COPPER 1/4 HD  
 SUBSTRATE: BERYLLIUM OXIDE  
 COVER: ALUMINA  
 TAB: BERYLLIUM COPPER PER ASTM B194  
 RESISTIVE FILM: THIN FILM


**FINISH:**

RoHS COMPLIANT  
 FLANGE: NICKEL OVER COPPER  
 TAB: SILVER PLATED

**ELECTRICAL:**

NOMINAL IMPEDANCE: 50 OHMS  
 FREQUENCY RANGE: DC-6.0 GHz  
 VSWR (MAX): 1.10:1 DC-2.0 GHz  
 1.15:1 2.0-4.0 GHz  
 1.30:1 4.0-6.0 GHz

AVERAGE POWER: 100 WATTS  
 DC RESISTANCE: 50  $\pm$  5% OHMS  
 TEMPERATURE COEFFICIENT:  $\pm$  200 PPM  
 OPERATING TEMPERATURE: -55°C TO +150°C

				EN# 06-F0824	APVD	DATE	REFERENCE	 8851 OLD KANSAS AVE. STUART, FL. 34997 561-286-9300			
				UNLESS OTHERWISE SPECIFIED 1. DO NOT SCALE DRAWING 2. DIMENSIONS ARE IN INCHES 3. DIMENSIONS ARE AFTER PLATING 4. CORNERS, EDGES AND FILLETS: R 5. SURFACE ROUGHNESS 6. REMOVE ALL BURRS			MATERIAL	TITLE			
				TOLERANCES .X $\pm$ .XX $\pm$ .XXX $\pm$ ANGLES X° $\pm$			FINISH	<b>TERMINATION,                  FLANGE MOUNT,                  100 WATT</b>			
				THE INFORMATION CONTAINED HEREIN IS (A) CONSIDERED PROPRIETARY TO FLORIDA RF LABS INC; (B) PROTECTED BY COPYRIGHT OWNED BY FLORIDA RF LABS INC; (C) CONSIDERED A "WORK FOR HIRE" UNDER COPYRIGHT LAW (D) PROTECTED BY TRADE SECRET LAWS WHICH MAKE ILLEGAL THE MISAPPROPRIATION OF THIS INFORMATION AND (E) IS TO BE USED SOLELY FOR THE PURPOSE WHICH IT IS SUPPLIED. THIS INFORMATION SHALL NOT BE DISCLOSED IN WHOLE OR IN PART, TO ANY PARTY, FOR ANY REASON WITHOUT THE EXPRESS WRITTEN CONSENT OF A QUALIFIED EXECUTIVE OF FLORIDA RF LABS INC.			SCALE	CAGE CODE ID NO.	SIZE	DRAWING NO.:	REV.
							2/1	2Y194	A	32A1156F	-
REV.	DESCRIPTION	DRAWN	APVD.	MFG:		CHKD:	DRAWN: JG 9/22/06		SHEET	OF	