

EDD

NOTES:
UNLESS OTHERWISE SPECIFIED, TOLERANCES ARE $\pm .010$ " [.254mm].

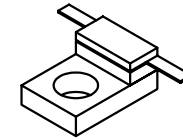
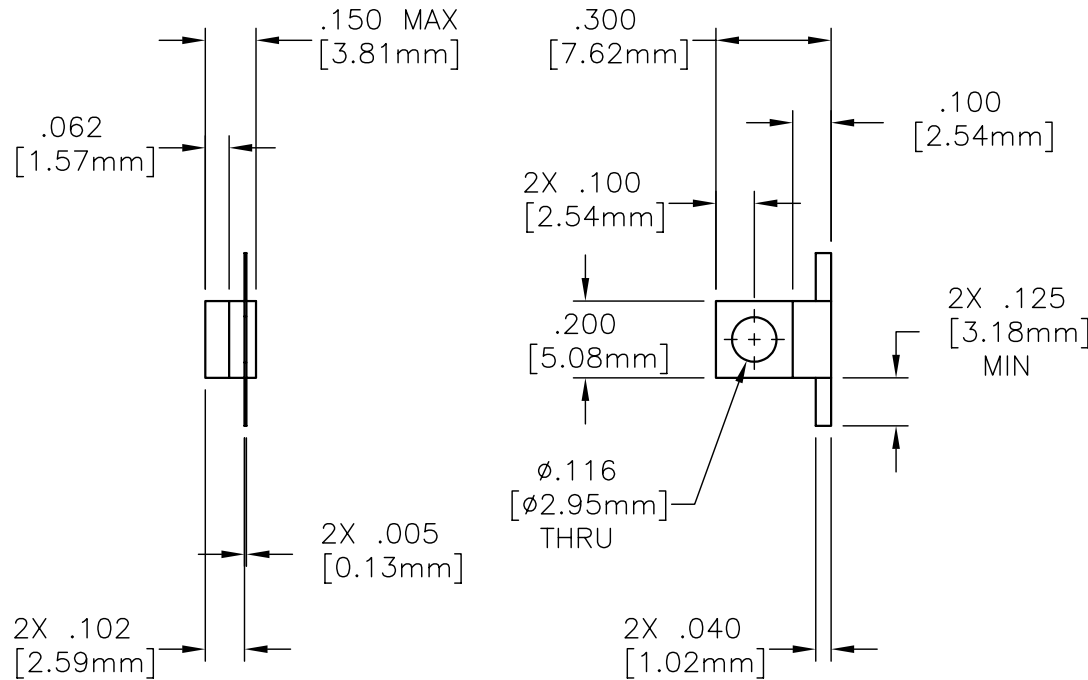
CAD#33-1041_A

DRAWING NO.:

33-1041-*

REV.

A



MATERIALS:


MTG. FLANGE: OFHC (1/4 HD)
SUBSTRATE: BERYLLIUM OXIDE
COVER: ALUMINA
TAB: BERYLLIUM COPPER PER ASTM B194
RESISTIVE FILM: NICHROME

FINISH:

MTG. FLANGE: NICKEL OVER COPPER
TAB: TIN/LEAD PER MIL-T-10727

TECHNICAL:

NOMINAL IMPEDANCE (OHMS): 50
FREQUENCY RANGE (MHz): 925 - 960
TEMPERATURE COEFFICIENT: ± 200 PPM/ $^{\circ}$ C MAX
OPERATING TEMP. ($^{\circ}$ C): -55° TO $+150^{\circ}$
INPUT POWER (WATTS): 10
ATTENUATION STABILITY: .0001 dB/dB/ $^{\circ}$ C
*ATTENUATION ACCURACY: 1-10 dB ± 0.5 dB
11-20 dB ± 1.0 dB

				RLSE# 02370	APVD MTG	DATE 04/98	REFERENCE	 8851 OLD KANSAS AVE. STUART, FL. 34997 772-286-9300						
				UNLESS OTHERWISE SPECIFIED 1. DO NOT SCALE DRAWING 2. DIMENSIONS ARE IN INCHES 3. DIMENSIONS ARE AFTER PLATING 4. CORNERS, EDGES AND FILLETS: R MAX 5. SURFACE ROUGHNESS: 6. REMOVE ALL BURRS			CATALOG		TITLE					
				TOLERANCES .X \pm .XX \pm .XXX \pm ANGLES X' \pm			MATERIAL	ATTENUATOR, FLANGE MOUNT, 10 WATT						
				THE INFORMATION CONTAINED HEREIN IS: (A) CONSIDERED PROPRIETARY TO FLORIDA RF LABS INC.; (B) PROTECTED BY COPYRIGHT OWNED BY FLORIDA RF LABS INC.; (C) CONSIDERED A "WORK FOR HIRE" UNDER COPYRIGHT LAW; (D) PROTECTED BY TRADE SECRET LAWS WHICH MAKE ILLEGAL THE MISAPPROPRIATION OF THIS INFORMATION; AND (E) IS TO BE USED SOLELY FOR THE PURPOSE WHICH IT IS SUPPLIED. THIS INFORMATION SHALL NOT BE DISCLOSED IN WHOLE OR IN PART, TO ANY PARTY, FOR ANY REASON WITHOUT THE EXPRESS WRITTEN CONSENT OF A QUALIFIED EXECUTIVE OF FLORIDA RF LABS INC.			FINISH							
A	ECN#01883	ALM 02/12/03					SCALE 2/1	CAGE CODE ID NO. 2Y194	SIZE A	DRAWING NO.:	REV.			
										33-1041-*	A			
REV.	DESCRIPTION	DRAWN	APVD.				MFG:	MJK 04/17/98	CHKD.:	NAK 04/16/98	DRAWN:	GEC 04/16/98	SHEET	OF