

EDD

NOTES:
UNLESS OTHERWISE SPECIFIED, TOLERANCES ARE $\pm .010$ " [.254mm].

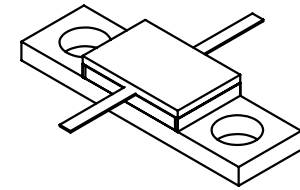
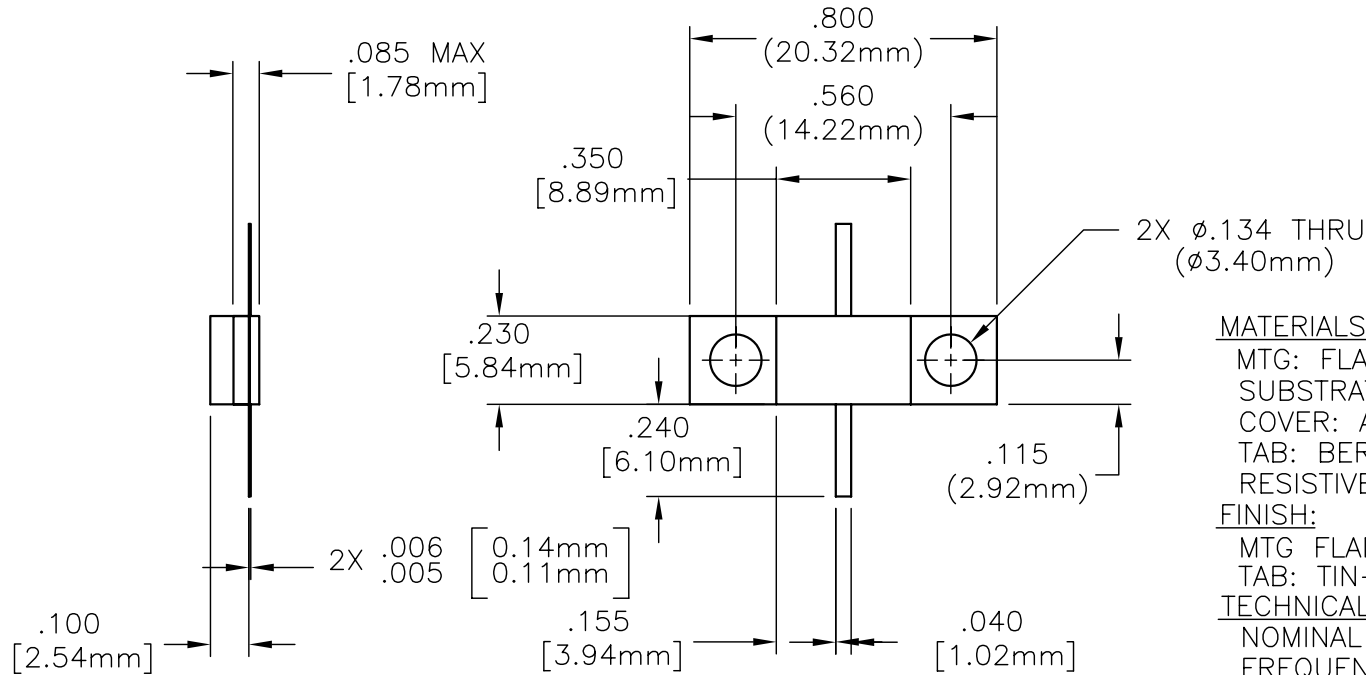
CAD#33-7023_A

DRAWING NO.:

33-7023-*

REV.

A



MATERIALS:


MTG: FLANGE: OFHC (1/4HD)
SUBSTRATE: ALUMINUM NITRIDE
COVER: ALUMINA
TAB: BERYLLIUM COPPER PER ASTM B194
RESISTIVE FILM: NICHROME

FINISH:

MTG FLANGE: NICKEL OVER COPPER
TAB: TIN-LEAD OVER COPPER

TECHNICAL:

NOMINAL IMPEDANCE (OHMS): 50
FREQUENCY RANGE (GHz): DC-2.5
OPERATING TEMP. (°C): -55° TO +150°
VSWR (MAX): 1.20
INPUT POWER (WATTS): 100
ATTENUATION STABILITY: .0001/dB/dB/°C
ATTENUATION ACCURACY: ± 1.5 dB

| | | | | | | | | | | | |
|------|-------------|----------------|-------|--|------------|------------------|----------------------|---|--|--------------|------|
| | | | | ECN# 02019 | APVD AF | DATE 04/21/03 | REFERENCE |  8851 OLD KANSAS AVE. STUART, FL. 34997 772-286-9300 | | | |
| | | | | UNLESS OTHERWISE SPECIFIED 1. DO NOT SCALE DRAWING 2. DIMENSIONS ARE IN INCHES 3. DIMENSIONS ARE AFTER PLATING 4. CORNERS, EDGES AND FILLETS: R MAX 5. SURFACE ROUGHNESS: 6. REMOVE ALL BURRS | | | MATERIAL | | TITLE | | |
| | | | | TOLERANCES .X \pm .XX \pm .XXX \pm ANGLES X° \pm | | | FINISH | | CHIP, ATTENUATOR, 100 WATT, -* = dB | | |
| | | | | THE INFORMATION CONTAINED HEREIN IS: (A) CONSIDERED PROPRIETARY TO FLORIDA RF LABS INC.; (B) PROTECTED BY COPYRIGHT OWNED BY FLORIDA RF LABS INC.; (C) CONSIDERED A "WORK FOR HIRE" UNDER COPYRIGHT LAW; (D) PROTECTED BY TRADE SECRET LAWS WHICH MAKE ILLEGAL THE MISAPPROPRIATION OF THIS INFORMATION; AND (E) IS TO BE USED SOLELY FOR THE PURPOSE WHICH IT IS SUPPLIED. THIS INFORMATION SHALL NOT BE DISCLOSED IN WHOLE OR IN PART, TO ANY PARTY, FOR ANY REASON WITHOUT THE EXPRESS WRITTEN CONSENT OF A QUALIFIED EXECUTIVE OF FLORIDA RF LABS INC. | | | SCALE 2/1 | CAGE CODE ID NO. 2Y194 | SIZE A | DRAWING NO.: | REV. |
| A | ECN#02121 | ALM 7/21/03 | | | | | | | 33-7023-* | A | |
| REV. | DESCRIPTION | DRAWN | APVD. | | | | MFG: MJK 04/18/03 | CHKD.: DR 04/16/03 | DRAWN: JAD 04/15/03 | SHEET 2 OF 2 | |