

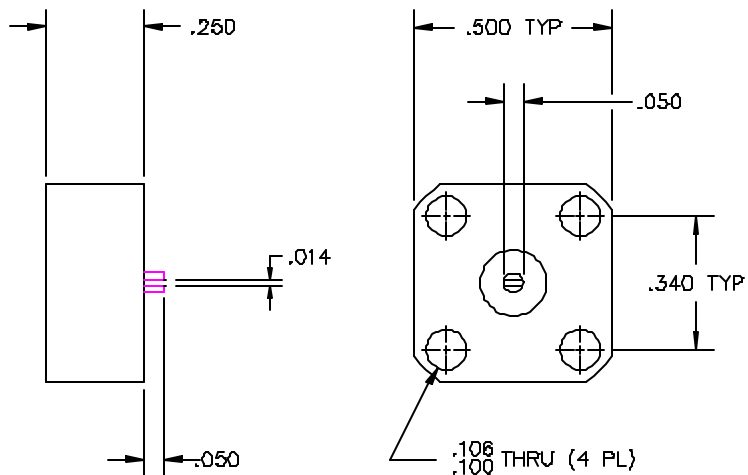
CAD#421046A2

DRAWING NO.

42-1046

REV.

A



MATERIALS:

BODY: COPPER PER ASTM B301
 CONTACT: BRASS PER QQ-B-626,
 1/2 HD, ALLOY 360
 SUBSTRATE: BERYLLIUM OXIDE
 RESISTIVE FILM: NICHROME

FINISH:

BODY: NICKEL PER QQ-N-290A
 CONTACT: GOLD PER MIL-G-45204B

A	DCN#0305	03/95	
REV.	DESCRIPTION	DATE	APPR.

UNLESS OTHERWISE SPECIFIED

1. DIMENSIONS ARE AFTER PLATING
2. DIAMETERS ON COMMON ϕ TO BE CONCENTRIC WITHIN T.I.R.
3. SURFACE ROUGHNESS
4. CORNERS AND EDGES R. MAX.

TOLERANCES

DECIMAL	FRACTION	ANGLES
.X ±		
.XX ±	±	± _____
.XXX ±	± .010	

ALL DIMENSIONS ARE IN INCHES

REFERENCE		
CATALOG		
MATERIAL		
FINISH		
SCALE	CAGE CODE ID NO.	SIZE
2X	2Y194	A
APPR.	CHK	

FLORIDA
R/F
Labs
INC.

P.O. BOX 2207
 PALM CITY, FL. 34990

TITLE
 TERMINATION, FLANGE
 30 WATT

DRAWING NO.	REV.
42-1046	A
DRAWN PSC	SHEET 1 OF 2
11/3/82	