

EDD

1. UNLESS OTHERWISE SPECIFIED TOLERANCES ARE  $\pm .010$

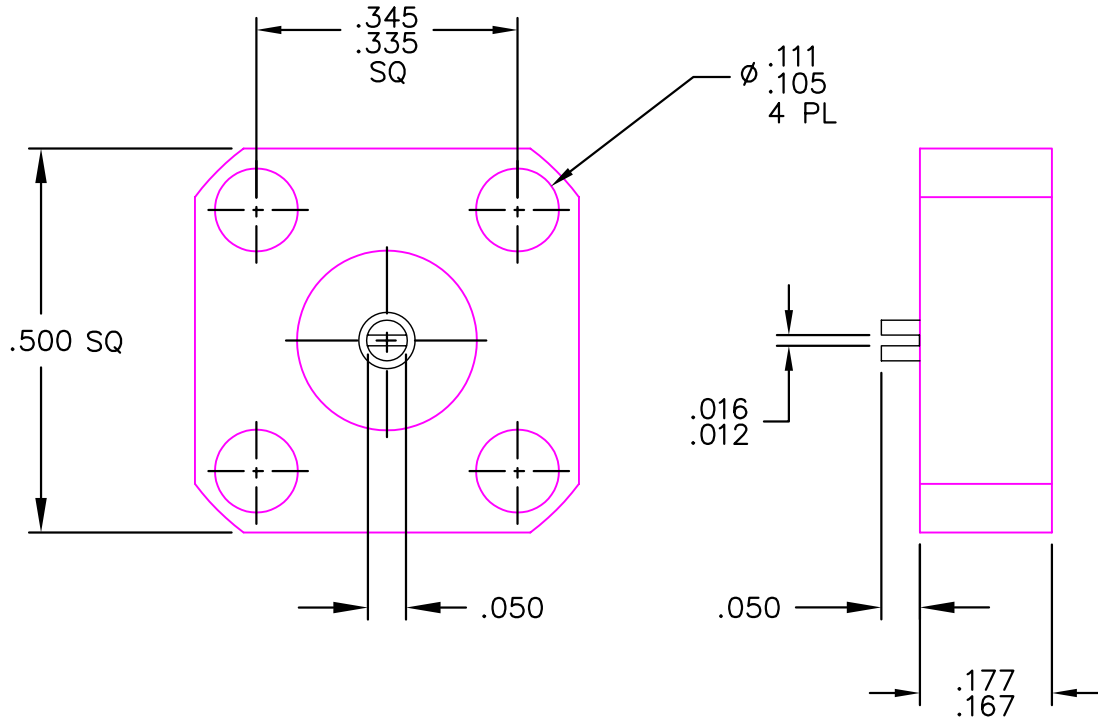
CAD#421056\_2

DRAWING NO.

42-1056

REV.

N/C



MATERIALS:

BODY: COPPER PER ASTM B301  
 CONTACT: BERYLLIUM COPPER PER QQ-C-530  
 INSULATOR: TEFLON PER MIL-P-19468  
 SUBSTRATE: BERYLLIUM OXIDE  
 RESISTIVE FILM: NICHROME

FINISH:

BODY: NICKEL PER QQ-N-290  
 CONTACT: GOLD PER MIL-G-45204

				<p>UNLESS OTHERWISE SPECIFIED</p> <p>1. DIMENSIONS ARE AFTER PLATING</p> <p>2. DIAMETERS ON COMMON Q<sub>L</sub> TO BE CONCENTRIC WITHIN _____ T.I.R.</p> <p>3. SURFACE ROUGHNESS _____ ✓</p> <p>4. CORNERS AND EDGES _____ R. MAX.</p> <p>5. REMOVE BURRS AND BREAK SHARP EDGES</p>			<p>REFERENCE</p>					<p>P.O. BOX 899                  STUART, FL. 34995</p>	
				<p>TOLERANCES</p> <p>DECIMAL FRACTION ANGLES</p> <p>.X ± _____</p> <p>.XX ± _____ ± _____</p> <p>.XXX ± _____</p>			<p>MATERIAL</p>			<p>TITLE</p> <p>TERMINATION, FLANGE                  20 WATT</p>			
				<p>SCALE</p> <p>4X</p>			<p>CAGE CODE ID NO.</p> <p>2Y194</p>		<p>SIZE</p> <p>A</p>				
				<p>FINISH</p>			<p>DRAWING NO.</p> <p>42-1056</p>		<p>REV.</p> <p>N/C</p>				
				<p>APPR.</p>			<p>CHK</p>		<p>DRAWN</p> <p>PSC                  2/3/97</p>				
				<p>ALL DIMENSIONS ARE IN INCHES</p>			<p>SHEET 1 OF 2</p>						
REV.	DESCRIPTION	DATE	APPR.										
N/C	RLSE#02093	2/97											

CAD#421056\_3

DRAWING NO.

42-1056

REV.

N/C

REQUIREMENTS	RATING	REQUIREMENTS	RATING
NOMINAL IMPEDANCE (OHMS)	50	VIBRATION	MIL-STD-202 METHOD 204 COND. D (20 G's)
FREQUENCY RANGE (GHz)	DC TO 18.0		
TEMPERATURE COEFFICIENT	LESS THAN 200 PPM	SHOCK	MIL-STD-202 METHOD 213 COND. 1 (100 G's)
TEMPERATURE RATING (°C)	-55 TO +125		
VSWR (MAXIMUM)	DC-4.0: 1.10:1	THERMAL SHOCK	MIL-STD-202 METHOD 107 COND. B (-65 TO +125 ° C)
	4.0-8.0: 1.15:1		
	8.0-12.0: 1.20:1		
	12.0-18.0: 1.30:1		
AVERAGE POWER (WATTS)	20	TERMINAL STRENGTH	2 LBS MINIMUM PULL
DC RESISTANCE	50 OHMS ± 5%		
<p style="text-align: center;"><u>AVERAGE POWER DERATING</u></p>		SOLDERABILITY	MIL-STD-202 METHOD 208
		RESISTANCE TO SOLDER HEAT	MIL-STD-202 METHOD 210 COND. A

TITLE TERMINATION, FLANGE  
20 WATT



P.O. BOX 899  
STUART, FL. 34995

DRAWN PSC 02/03/97

SHEET 2 OF 2

DRAWING NO.

42-1056

REV.

N/C