

EDD

1. UNLESS OTHERWISE SPECIFIED TOLERANCES ARE $\pm .010$

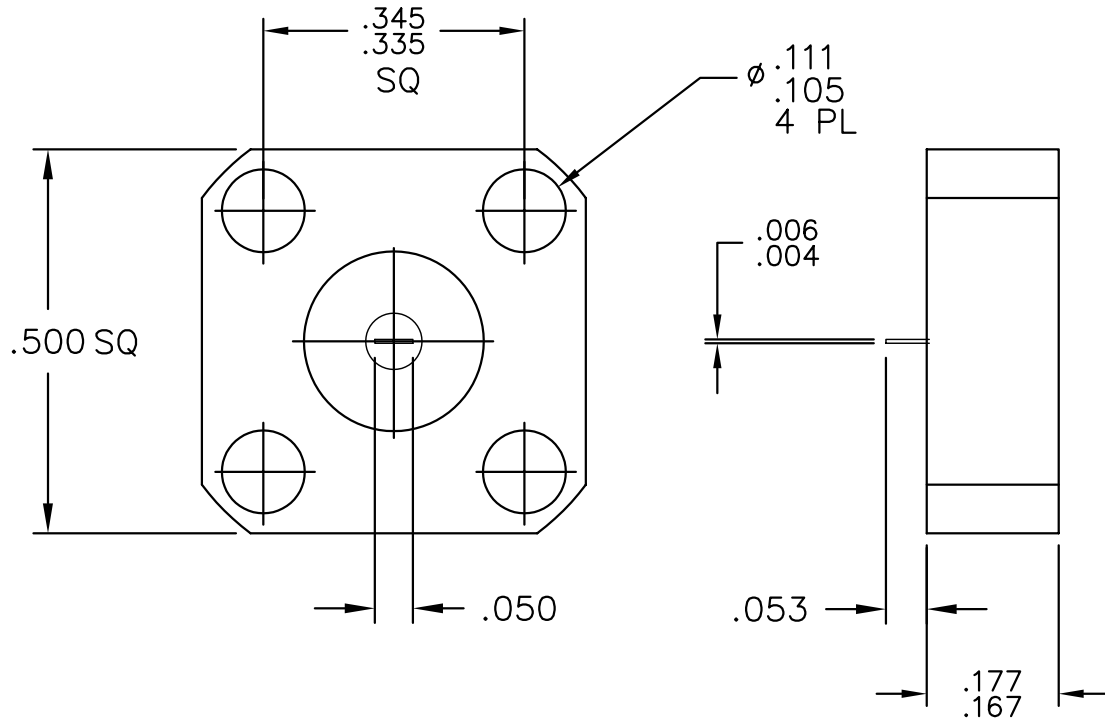
CAD#421058_2

DRAWING NO.

42-1058

REV.

N/C



MATERIALS:

BODY: COPPER PER ASTM B301
 CONTACT: BERYLLIUM COPPER PER QQ-C-530
 INSULATOR: TEFLON PER MIL-P-19468
 SUBSTRATE: BERYLLIUM OXIDE
 RESISTIVE FILM: NICHROME

FINISH:

BODY: NICKEL PER QQ-N-290
 CONTACT: GOLD PER MIL-G-45204

				<p>UNLESS OTHERWISE SPECIFIED</p> <p>1. DIMENSIONS ARE AFTER PLATING</p> <p>2. DIAMETERS ON COMMON Q TO BE CONCENTRIC WITHIN _____ T.I.R.</p> <p>3. SURFACE ROUGHNESS _____</p> <p>4. CORNERS AND EDGES _____ R. MAX.</p> <p>5. REMOVE BURRS AND BREAK SHARP EDGES</p>			<p>REFERENCE</p>			<p>FLORIDA RJF Labs <small>INC.</small></p> <p>P.O. BOX 899 STUART, FL. 34995</p>		
				<p>TOLERANCES</p> <p>DECIMAL FRACTION ANGLES</p> <p>.X \pm _____</p> <p>.XX \pm _____ \pm _____</p> <p>.XXX \pm _____</p>			<p>MATERIAL</p>			<p>TITLE</p> <p>TERMINATION, FLANGE 20 WATT</p>		
				<p>ALL DIMENSIONS ARE IN INCHES</p>			<p>SCALE</p> <p>4X</p>	<p>CAGE CODE ID NO.</p> <p>2Y194</p>	<p>SIZE</p> <p>A</p>	<p>DRAWING NO.</p> <p>42-1058</p>	<p>REV.</p> <p>N/C</p>	
REV.	DESCRIPTION	DATE	APPR.				APPR.	CHK	DRAWN PSC 2/3/97		SHEET OF	

N/C RLSE#02093 2/97